



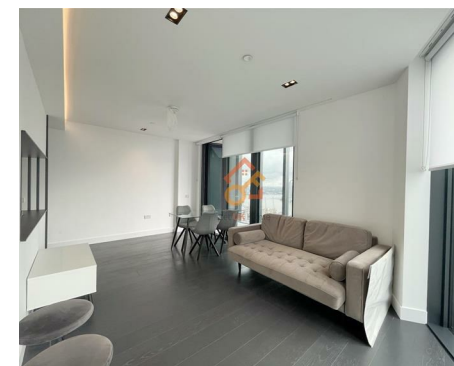
Let **UK** Home

2 Bedrooms

Flat

Located in London

£3,850 Per Month



info@letukhome.co.uk

<https://www.letukhome.co.uk/>

01795 358 886



203 Marsh Wall London

E14 9ZN



Let UK Home are excited to offer this spectacular two bedroom apartment in the heart of Amory Tower, part of the Madison, located in Canary Wharf.

This property comprises a large bright open plan kitchen and living room with great views, two double bedrooms with fitted wardrobes (master en-suite), a large family sized bathroom and ample storage.

The apartment is equipped with a gym, private screening room, swimming pool, private spa, private bar, etc. to meet your daily gathering needs and provide a good place to relax.

The development enjoys a premium geographic location, with a bus stop right downstairs and within walking distance to three major transport lines: the Elizabeth Line, Jubilee Line, and DLR. It is also very close to London City Airport and Stratford International Station, the latter connecting to all Eurostar stations in the UK, making it easy to reach central London and destinations around the world.

South Quay and Canary Wharf underground stations are within walking distance, providing quick access to renowned institutions such as King's College London's Management School, Queen Mary University, London School of Economics, Imperial College London, and other prestigious universities.

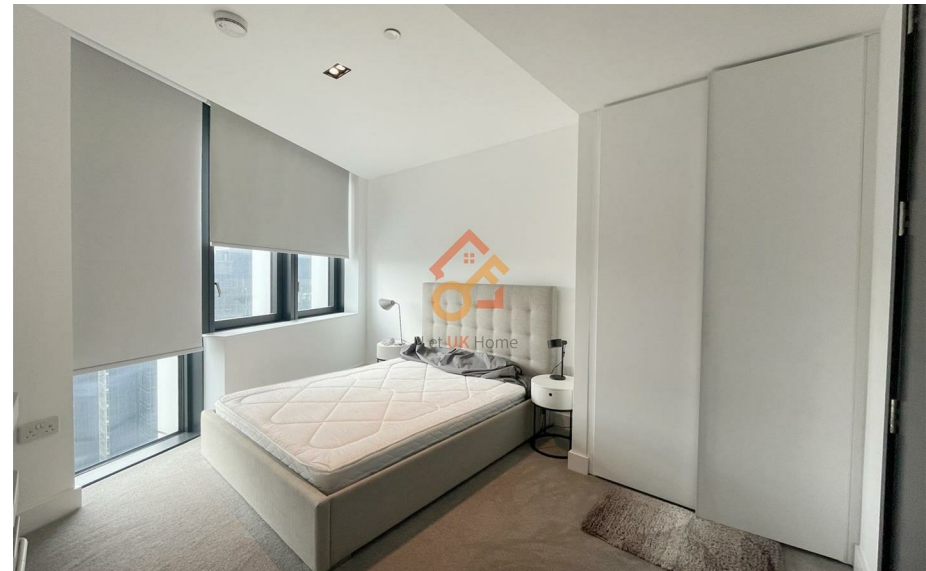
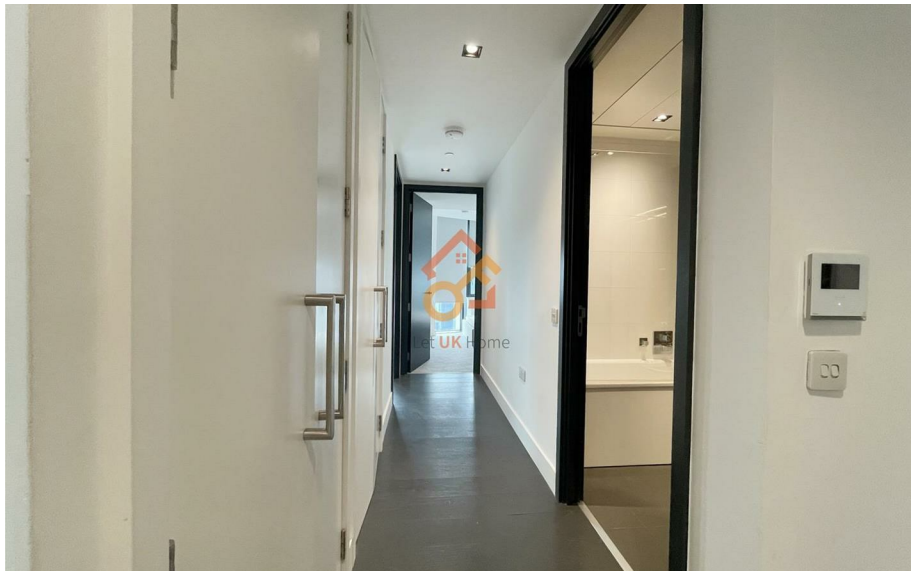
The area where the development is located has many landmark attractions, art centers, museums, and theaters, such as London Bridge, the Royal Observatory Greenwich, Canary Wharf Arts Centre, the Museum of London, and the Royal

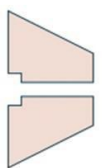
203 Marsh Wall London

£3,850 Per Month



- 18th Floor
- 24h Security
- Swimming Pool
- Cinema & Game Room
- Concierge Service
- The Spa
- The Gym
- EPC: B





2 bed apartment

Living & Dining	5,900mm x 3,370mm	19'4" x 11'1"
Kitchen	2,220mm x 2,850mm	7'3" x 9'4"
Principal Bedroom	3,870mm x 3,250mm	12'8" x 10'8"
Shower Room	1,250mm x 2,100mm	4'1" x 6'11"
Bedroom 2	3,420mm x 3,200mm	11'3" x 10'6"
Bathroom	2,100mm x 1,700mm	6'11" x 5'7"
Apartment area	76 sq m	814 sq ft
Winter Garden	7 sq m	75 sq ft
Total area	83 sq m	889 sq ft



Let **UK** Home

3F 2 Eastbourne Terrace
 Paddington
 London
 W2 6LG

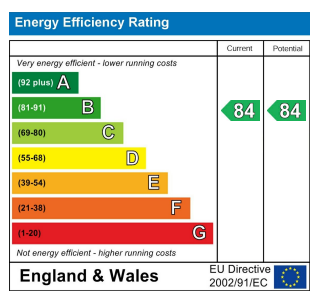
01795 358 886

info@letukhome.co.uk

Council Tax Band: F

Local Authority:

Agents Note: Whilst every care has been taken to prepare these particulars, they are for guidance purposes only. All measurements are approximate and are for general guidance purposes only and whilst every care has been taken to ensure their accuracy, they should not be relied upon and potential buyers/tenants are advised to recheck the measurements.



<https://www.letukhome.co.uk/>